



RIVER HIGHLANDS

## **Guest Information Guide**



## Contents

TPC River Highlands General Club Policies .....	2
Club Directory .....	3
Club Hours of Operation .....	4
Food & Beverage Hours of Operation.....	5
Golf Operations.....	6
Arranging Starting Times (at TPC River Highlands) .....	6
Food & Beverage .....	8
Driving Directions to TPC River Highlands .....	10
History of the Club .....	11

*Host of the*



**TRAVELERS**  
**CHAMPIONSHIP**



## **TPC River Highlands General Club Policies, Rules & Regulations\***

The following policies have been adopted for the common good of all Members and are extensions of, and consistent with the Club By-Laws. Violations of the Rules and Regulations that follow may result in disciplinary actions. Members must inform their invited guests of the following rules as they will be held responsible for any violations committed by their guests.

### **Dress Code**

Proper attire must be worn at all times in the Clubhouse, on the Golf Course and on the Practice Facility. Bermuda-length shorts, sweaters with mock turtlenecks and collared shirts are acceptable. Bathing attire, T-shirts, gym shorts, coaching shorts, tank tops, tube tops, halter tops, mesh shirts, cutoffs, short shorts, tennis shorts, and other dress of similar nature are inappropriate. Shirts must be tucked in at all times and all headwear must be worn straight and forward. Any Member or guest not in compliance with this policy may be restricted from enjoying all Club privileges until properly attired.

### **Pace of Play**

It is the responsibility of each Member and their guest(s) to observe pace of play goals. A pace rating has been conducted by the Connecticut State Golf Association which rated the reasonable and appropriate rate for 18 holes to be 4 hours 10 minutes. Pace of play goals will be communicated verbally by the starter and through golf cart signage. It is each group's responsibility to be observant of its position on the golf course. Course advisors will assist in maintaining the pace of play by monitoring elapsed time and the group's location on the course. Golfers not in compliance with the pace standards are subject to penalties including removal from the golf course.

### **Homeowner Relations**

Golfers may enter adjacent homeowner property to retrieve errant golf balls. However, golfers must refrain from driving golf carts onto the property or playing any shot from the property. Should an errant shot strike a home adjacent the course, please notify the golf shop and provide your contact information.

### **Metal Spike Alternatives**

The TPC Network has discontinued the use of metal spikes for daily play for all Members and guests. Golfers will be required to use metal spike alternatives when playing TPC. For those who have metal spikes, soft spikes will be available in the locker room or Golf Shop for a nominal fee.

for a complete Membership Rules & Policies Guide, please visit <http://tpc.com/riverhighlands/guest-information/>

# Club Directory

One Golf Club Road - Cromwell, CT 06416

Telephone: (860) 635-5000

## Administrative Offices

General Manager	David Corrado	ext. 6784
Administrative Assistant	Kara Larson	ext. 6244
Membership Sales	Kayleigh Murphy	ext. 6795
Accounting Director	Jennifer Petrillo	ext. 6807

## Dining Services

Director of Food & Beverage	Ehrin Cadigan	ext. 6848
Food & Beverage Manager	McKenzie Peil	ext. 6858
Catering and Event Sales	Pamela Moan	ext. 6853
Executive Chef	Paul Landau	ext. 6854

## Golf Shop - Direct Calls & Starting Time Reservations - (860) 635-2211

Head Golf Professional	Ron Scheyd	ext. 6824
Assistant Golf Professionals	Noah Hedberg	ext. 6838
	Alex Tawrel	ext. 6827
	Seth Greenlees	ext. 6827
Director of Player Development	Justin Smith	ext. 6834

## Golf Course Maintenance - Direct Calls - (860) 635-2954      Fax - (860) 613-3911

Director of Golf Course Maintenance	Jeff Reich	ext. 6861
Senior Assistant Superintendent	Jason Cannata	ext. 6862
Assistant Superintendent	Josh Breiling	ext. 6863
GCM Administrative Assistant	Gerry Gilbert	ext. 6712



## Club Hours of Operation

### Administrative Offices

Monday - Friday ..... 8:30 a.m. - 5:00 p.m.

### Golf Shop (Closed Mondays)

January - March

Tuesday - Saturday ..... 9:00 a.m. - 5:00 p.m.

April

Tuesday - Sunday ..... 7:30 a.m. - 6:00 p.m.

May - September

Tuesday - Friday ..... 7:00 a.m. - 6:00 p.m.

Saturday - Sunday ..... 6:30 a.m. - 6:00 p.m.

October

Tuesday - Sunday ..... 7:30 a.m. - 5:30 p.m.

November - December 23

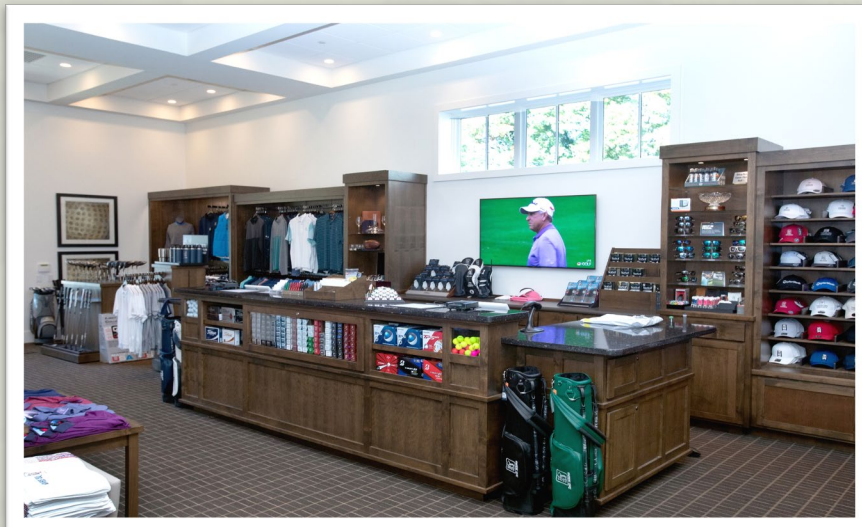
Tuesday - Sunday ..... 9:00 a.m. - 5:00 p.m.

December 24 - January 1 ..... CLOSED

### Practice Facility

April - November

When Golf Shop Opens until 1 hour prior to sunset



## Food & Beverage Hours of Operation

### Grille 58 (Closed Mondays)

January – March

Wednesday.....	11:00 a.m. – 3:30 p.m.
Thursday & Friday .....	11:00 a.m. – 8:00 p.m.
Saturday .....	8:00 a.m. – 8:00 p.m.
Sunday .....	8:00 a.m. – 3:30 p.m.

April

Tuesday – Sunday.....	7:30 a.m. – 8:00 p.m.
-----------------------	-----------------------

May – September

Tuesday – Sunday .....	7:00 a.m. – 8:30 p.m.
------------------------	-----------------------

October

Tuesday – Sunday.....	7:30 a.m. – 8:00 p.m.
-----------------------	-----------------------

November – Thanksgiving Day

Tuesday – Sunday.....	8:00 a.m. – 8:00 p.m.
-----------------------	-----------------------

Post-Thanksgiving – December

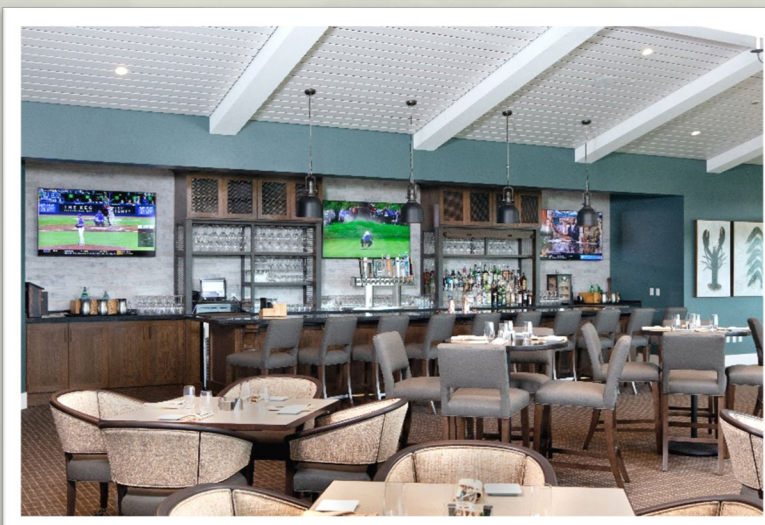
Wednesday.....	11:00 a.m. – 3:30 p.m.
Thursday & Friday .....	11:00 a.m. – 8:00 p.m.
Saturday .....	8:00 a.m. – 8:00 p.m.
Sunday .....	8:00 a.m. – 3:30 p.m.

### ULTRA Turn

April – November (weather permitting)

Tuesday – Sunday .....Daily, service based on golf reservations

Banquet Space Available Year-round





# Golf Operations

## **Arriving at the course**

When you arrive, please follow the signs to Bag Drop. Staff will be available to greet you and set you up with a golf cart. Upon parking, the golf shop will be located at the far-right hand side of the building for check-in. The locker room is also available for your daily use and is located through the golf shop and to the right at the bottom of the stairs.

## **Practice Facility**

The practice facility opens 30 minutes before the first tee time and is available to registered guests up to 1 hour prior to their starting time. The practice facility features a putting green, short game area and ample tee space. Practice balls are complimentary and can be found at the practice facility.

## **Golf Cars**

Our golf cars are equipped with the Visage GPS system for yardages and have been optimized to make your day enjoyable. Please keep the golf cars 20 yards from all greens and tees and out of the streets and parking lots. If your golf cart enters a restricted area, it will temporarily shut down. Place the cart in reverse and back up to the cart path where it will stitch back on and you may resume play.

## **Cancellations**

The TPC River Highlands requires a minimum of 24-hour advance notification on all starting time cancellations in order to avoid No Show charges. Starting times cancelled within 24 hours, that are not resold, may be charged the appropriate guest and golf cart fees. To adjust or cancel a starting time, please call the Golf Shop at 860-635-2211.

## **Golf Services**

There are a number of Club amenities and services available to your guests when visiting the TPC River Highlands, including club rentals, shoe cleaning service (in-season), complimentary daily guest lockers, and use of the entire locker room facilities. Golf lessons are also available for Group Instructional Opportunities geared for three to 50 persons, Theme Instructional Clinics such as Short-Game Skill Areas, Long Irons, Trouble Shots and Course Management, as well as Introductory Golf Lessons for individuals or groups. Gift cards for the TPC River Highlands Golf Shop and custom-ordered merchandise with your company's logo are also available.

## **Rental Clubs**

Rental clubs are available for your use and can be arranged during your check-in at the golf shop. Sets are available in different shaft flexes and by different name brand manufacturers such as Titleist, TaylorMade, and Callaway. The daily rental fee is \$70 per set.

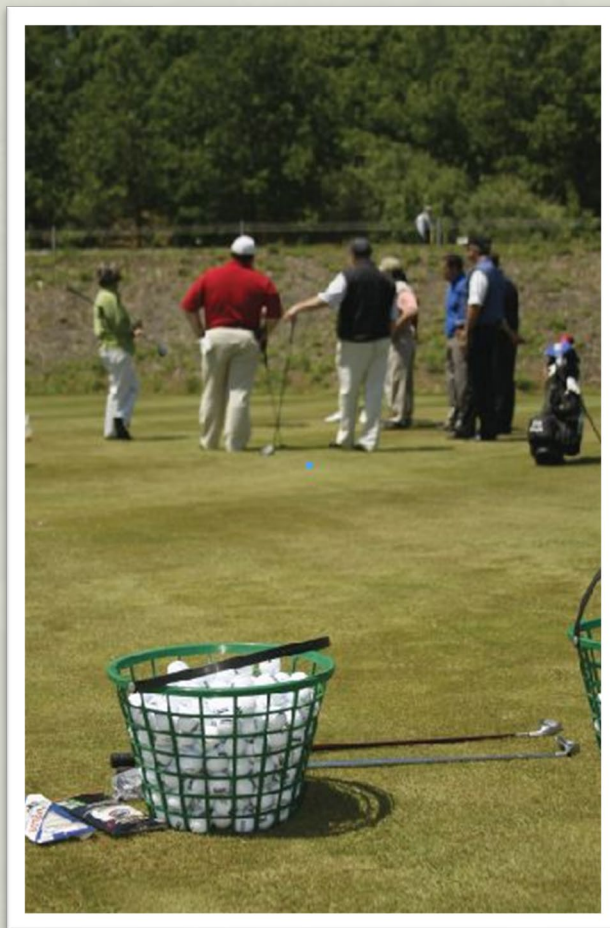
## Golf Operations (cont'd)

At TPC River Highlands, we pride ourselves on providing “The PGA TOUR Experience” to each and every guest. To ensure that your guests have the opportunity to fully enjoy their time with us, we ask that you allow 1 hour before the scheduled starting time for dining and use of the golf practice facility.

While beverage carts are not available, golfers are offered beverages, quick food items and light snacks at the ULTRA Turn located to the right of #9 green.

### Club Contacts

To order specialty merchandise, purchase gift cards, schedule golf lessons and Corporate Golf Clinics, or if you wish to obtain information on anything related to golf including starting time reservations, please call the Golf Shop at 860-635-2211.





## Food & Beverage

The Food & Beverage Department is dedicated to ensuring that your guests' dining experiences at the Club not only meet, but exceed, their expectations. There are many opportunities for the Club staff to be of service to you and your guests, from preparing a quick lunch in Grille 58 to serving up to 300 guests for a special event.

### **Ala Carte ~ Grille 58**

We feature our grille menu throughout the year with seasonal specials. During the golf season, we offer a multitude of breakfast and lunch selections, as well as dinner entrees. Reservations are always encouraged, especially for dinner service, but walk-ins are also welcomed on a "first-come-first-serve" basis. Groups that are larger or would like a more private room can reserve the Travelers Board Room (up to 12 people) or The Overlook (groups 13-56). Outdoor drinks or dining is also available on the balcony off Grille 58 or on the lower patio. If you or your guests have any special dietary needs or any special requests, please let our staff know when the reservation is made.



### **Highland Gatherings - Cluster Outings**

A Highland Gathering is a perfect way to entertain 12 to 48 of your company's most important clients in a relaxed atmosphere. Gatherings are treated as mini-golf tournaments complete with scoring, contests, personalized scorecards, personalized and cart signs with your logo, and a private meeting room. You will also receive the services of our event coordinator and assistant golf professional to assist you in hosting your day. Please call the Golf Shop at 860-635-2211 for more information and to schedule your outing.





## Food & Beverage (cont'd)

### Banquet & Meeting Services

The TPC Clubhouse are available for private & corporate functions throughout the year. The Travelers Board Room is ideal for small meetings and intimate parties of up to 12 guests, while The Overlook with adjoining balcony seats up to 56 people. Larger groups can be accommodated in Highlands View Event Hall, with a variety of room setups that can serve up to 300 guests. Customized menus and full audio/visual services are available to groups booking any of our banquet and meetings spaces.



### Monday Golf Outings

The TPC would be honored to host a large golf event for your organization. With a minimum of 100 golfers, we have the capability to dedicate the entire golf course to your event and provide the entire Clubhouse to set up a registration room, meeting facility, and lunch. We can offer a full-service Golf Outing experience customized to meet your needs and promote your organization. Monday Outing dates are limited, so please call our Golf Shop at 860-635-2211.

To learn more or book an event, please call Pamela Moan,  
Catering and Sales Director, at (860) 635-5000 x6853.



## Driving Directions

CLUBHOUSE: (860) 635-5000 ~ GOLF SHOP: (860) 635-2211

### **From Hartford/Springfield and Bradley Airport (I-91 Southbound):**

I-91 South to Exit 23 (West Street, Rocky Hill). Take a left off the ramp and go to the intersection of Route 99. Take a right onto Route 99 (South). Go approximately 2 miles, on the left is Golf Club Road (TPC sign at corner). Turn left on Golf Club Road and follow straight into the TPC.

### **From New Haven (I-91 Northbound):**

I-91 North to Exit 23 (West Street, Rocky Hill). Take a right off the ramp and go to the intersection of Route 99. Take a right onto Route 99 (South). Go approximately 2 miles, on the left is Golf Club Road (TPC sign at corner). Turn left on Golf Club Road and follow straight into the TPC.

### **From Connecticut Shoreline/Rhode Island:**

I-95 to Route 9 (North) to Exit 18 (Route 99, Cromwell). Follow Route 99 for approximately 3 miles, on the right is Golf Club Road (TPC sign at corner). Turn right on Golf Club Road and follow straight into the TPC.

### **From Farmington/New Britain:**

Route 9 (South) to Exit 19 (Route 372, Cromwell). Take a left off the ramp and go to the intersection of Route 99. Take a left on Route 99. Go approximately 2.5 miles, on the right is Golf Club Road (TPC sign at corner). Turn right on Golf Club Road and follow straight into the TPC.

### **From New York/New Jersey:**

I-95 North to I-91 North (New Haven). Follow directions from New Haven. (Approximately 2.5 hours from George Washington Bridge)

### **From Boston:**

Mass Pike to Route 84 West to I-91 South (Hartford). Follow directions from Hartford. (Approximately 2 hours)

### **From Danbury (Route 84 Eastbound):**

Route 84 East to Route 691 East. Take left exit for I-91 North. Follow directions from New Haven.

## History of the Club

The original piece of property known as Edgewood Country Club was designed in 1928. In 1982, Pete Dye was hired to redesign what became the TPC of Connecticut, providing a new venue for the Greater Hartford Open in 1984. In 1989, the golf course was again redesigned by Bobby Weed and PGA TOUR Design Services Inc., with Howard Twitty and Roger Maltbie serving as player consultants. Most recently, the course was again updated by PGA TOUR Design and Course Services in 2015-16 with updates to bunkers, tees and greens throughout the course.

Our championship golf course has been ranked by Golf Digest among the top ten in the state of Connecticut and awarded Best CT Private Course by CTGolfer Online six years in a row. Challenging, yet fair, the course plays to a par 70 and stretches to 6,841 yards, though golfers will find the three more forward tees demanding enough. The finishing holes provide a memorable climax to the golfing experience. Holes 15 through 17, commonly referred to as The Golden Triangle, play around a four-acre pond that dictates a variety of shot-making options. Number 18 leads to a green that is framed by a grass amphitheater.

The Practice Facility is the one of the finest in Connecticut and provides the best conditions to help improve every aspect of your golf game. The Practice Tee provides nine target greens at varying distances up to 360 yards will test your precision; the 11,000 square foot Putting Green simulates speed and conditions on the course, and the 13,000 square foot Chipping Area complete with sand bunker helps shape your short game. Our staff of PGA Golf Professionals offers clinics, group and individual lessons, club fitting and repair.

The experience at the TPC River Highlands does not stop with the award-winning golf course and Golf Shop. The brand new 40,000 square foot clubhouse opened in 2019, providing a first-class setting for Members and their Guests. Grille 58, named after Jim Furyk's record PGA TOUR round, features is a beautiful combination of modern simplicity and metal accents, with an adjoining balcony offering dramatic views of the golf course. Multiple meeting spaces are available to accommodate groups from 12 to 300. Locker room facilities are available for golfers to prepare for their round as well as relax post-golf in their adjoining lounges.

The pool and tennis facility were a welcomed addition to the Club in 1997, offering golf Members and their guests another venue for recreation and relaxation. The ULTRA Turn, located between the 9th green and the Clubhouse, provides not only a stop for golfers but a place to enjoy a leisurely lunch by the pool.

As the 49th course to become fully certified in the Audubon Cooperative Sanctuary Program for Golf Courses (ACSP), we proudly support ecologically sound land management and the conservation of our natural resources, carefully protecting wildlife habitats.

Our goal is to consistently exceed our Members' and Guests' expectations by providing a quality product and exceptional customer service.



## Course Statistics

CLUBHOUSE: (860) 635-5000 ~ GOLF SHOP: (860) 635-2211

PAR 70 ~ Course Record ~ 58 by Jim Furyk ~ August 7, 2016

<b>Tees of Play</b>	<b>Yardage</b>	<b>Course Rating</b>	<b>Slope Rating</b>	<b>Suggested Handicap Range</b>
Gold Tees	6,841 yards	73.0 rating	131 slope	0-4 handicap
Blue Tees	6,518 yards	71.5 rating	127 slope	5-9 handicap
Green Tees	6,146 yards	69.6 rating	126 slope	10-14 handicap
White Tees	5,873 yards	68.7 rating	124 slope	15+ handicap
Red Tees	4,871 yards	69.6 rating	122 slope	

### Featured Holes



Hole #15

Par 4 ~ 296 yards

One of the most exciting holes on the PGA TOUR, No. 15 at TPC River Highlands forces players to make good decisions. With water to the left and sand to the right, players must decide whether to try to drive the green or play it safe.



Hole #16

Par 3 ~ 171 yards

This scenic par 3 requires a well struck mid iron to clear the forced carry over water and stop the ball a shallow green protected by bunkers left and right. The green features multiple slopes providing multiple difficult hole locations.



Hole #17

Par 4 ~ 433 yards

Intimidation is the feeling while standing on the tee as players aim to split the fairway between water right and bunkers left. The approach shot will need to carry the water the rest of the way to the undulating green.

A tough finish to a great three -hole stretch.



**RIVER HIGHLANDS**  
A PGA TOUR Club

One Golf Club Road | Cromwell, CT 06416 | 860.635.5000 | [tpc.com/riverhighlands](http://tpc.com/riverhighlands)